

Volume 15  
Issue 1

JAN  
2021

January



GARNET

COMMUNITY INFORMATION AGENCY

C.I.A. NEWSLETTER

## Save Fuel Shop Local!

### Pastor's Association Says Thanks

Potlatch Pastors Association would like to thank everyone that helped provide a Christmas Holiday Food Basket for 52 families, wrapped books, beautiful centerpieces, and toys for all 102 kids.

This takes many people and businesses to make this possible! When people in our community fall on hard times, we give them a hand up! Merry Christmas everyone!

If you helped in any way our wish for you is to be blessed as you blessed others less fortunate! Thank you!



## WE SURVIVED 2020



**Wear a mask. Save lives.  
Wear a face cover  
Wash your hands  
Keep a safe distance**

### COMMUNITY INFORMATION AGENCY

#### Advertising Information

1/8 page ad: \$30.00

1/4 page ad: \$45.00

1/2 page ad: \$75.00

Full page ad: \$140.00

**Mail your ad and check by the 20th of the month**

Community Information Agency

P.O. Box 44,

Princeton, ID 83857

Or e-mail to:

**potlatchcia@potlatch.com**

**by the 20th of the month.**

**If you need an ad designed, just email your information and the ad will be made for you.**

**PALOUSE RIVER  
COMMUNITY CENTER  
P. O. Box 44  
PRINCETON, ID 83857**

**PRSR STD  
ECRWSS  
U.S. POSTAGE  
PAID  
EDDM Retail**

2021



## **LOCAL INFORMATION YOU NEED TO KNOW!**

### **OWSA Quarterly Meeting Notice**

The quarterly meeting for Onaway Water and Sewer Association will be held January 13, 2021 at 6 p.m.

Due to Idaho's Stage 2 protocols, the meeting will be not open to the public. If you would like the meeting minutes sent to you, please email [onawaywaterand-sewer@yahoo.com](mailto:onawaywaterand-sewer@yahoo.com) or call 208-596-6843.

### **PRCC GIVES THANKS**

The Palouse River Community Center would like to thank everyone who helped to put up the Christmas lights on the building and at the park. It is definitely a team effort to decorate every year.

We appreciate everyone's contribution in making Princeton look very festive this holiday season. We truly could not do this without our volunteers. Many thanks !

### **Three ways to avoid COVID-19 vaccine scams**

COVID-19 vaccines are on the way. While distribution plans are still in the works, it's not too early to talk about how to avoid the scams that are popping up around the vaccine. Here are three tips:

- You can't pay to put your name on a list to get the vaccine sooner.
- Beware of people trying to sell you treatments or medications to prevent the coronavirus.
- Hang up if you get a call about the vaccine that asks for your Social Security, bank account or credit card number.

For more information, read the FTC's blog, [COVID-19 vaccines are in the pipeline. Scammers won't be far behind](#). For the latest vaccine updates, check with the [Centers for Disease Control & Prevention \(CDC\)](#). To learn more about how to manage your finances during the pandemic, visit [consumerfinance.gov/coronavirus](https://consumerfinance.gov/coronavirus).

### **Parade Winners**

#### **Best overall**

Distinguish Young Women  
Group

1st...Jessica Schofield

2nd...Potlatch FFA

#### **Commercial**

1st...G&C Growers

2nd...Floyd's Harvest  
Foods

#### **Individual**

1st...Potlatch Fire & Ambulance



# *Pine Creek*

ROCK LLC  
DEARY, ID

**(208) 877-1239**

## **ROCK SALES & DELIVERY**

HWY 9 PIT (VERLE KOEHN PIT)  
2518 HWY 9, PRINCETON

3/4" minus 2" minus

1-1/4" Clean Drain Rock

Pit Run

Decorative Boulders

**(208) 877-1239**

*pinecreekrock@moscow.com*

# **FM AUTO** **Sales & Service**

105 8th Street  
Potlatch, ID 83855

**208-875-1799**



ACCEPTED



## **Quality Farm and Ranch Fencing in the Northwest**

- Livestock
- Noble Panel Products
- Residential
- DIY Packages

For a **FREE** estimate, give us a call at: **(208)217-1914**

[holdemfencing@gmail.com](mailto:holdemfencing@gmail.com) [www.holdemfencing.com](http://www.holdemfencing.com)

# **GUTTER PROZ**

**JAY ENSZ**  
Owner

208-301-7668

[mineralmountainservices@gmail.com](mailto:mineralmountainservices@gmail.com)

**Call for a  
FREE ESTIMATE!**

## **Potlatch Food Pantry**

Potlatch Food Pantry is open January 14 and 28 from 10:00 a.m. to noon and 6:00-8:00 p.m. The Idaho Food Bank truck comes January 28 to Grace Community church.

The Scouts brought in 2,021 pounds of food in their Scouting for Food and \$80! Many thanks to all who remember us with food and money donations.

We can be reached at P.O. Box 453, Potlatch, ID 83855. Call 208-875-8953 or city hall in a food emergency.



## **Happy New Year**

As the calendar turns the page, we wish you the very best in the year ahead.



**Carolyn S Hicklin**  
Financial Advisor  
212 Rodeo Drive Suite 810  
Moscow, ID 83843  
208-883-4460

[edwardjones.com](http://edwardjones.com)  
Member SIPC

**Edward Jones**  
MAKING SENSE OF INVESTING



# HATTER CREEK EARTHWORKS LLC

ROADS | DRIVEWAYS | SEPTIC SYSTEMS  
EXCAVATION | PONDS | ROCK & GRAVEL

208/875-8860 office | 208/669-0989 cell

Dennis Ownbey

HatterCreekEarthworks.com

## Palouse Valley Septic Service LLC

TYSON KOEHN

Tank Pumping – Septic Systems Installed  
Excavation & Gravel Hauling

(208)875-1350

PO Box 367

(208)596-6016

POTLATCH, ID 83855

septiccleaner@gmail.com

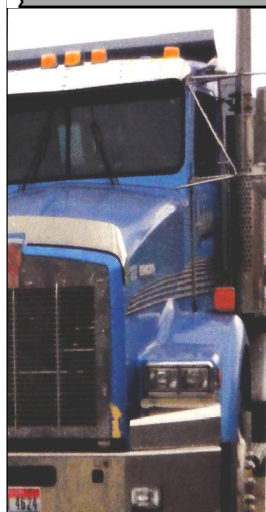
ID# RCE-34655  
WA# PALOUVS875CE

GET A QUOTE ONLINE! @ THEROOFFINGBARN.COM

METAL PANELS - MADE TO ORDER  
TRIM & FLASHING - STANDARD OR CUSTOM

1296 Kennedy Ford Rd, Potlatch ~ 208.875.9612

**THE**  
**ROOFING BARN**  
METAL ROOFING ~ SIDING ~ TRIM



**GARY ANDERSON, LLC**  
**ROCK SALES AND DELIVERY**

1020 McBride Road  
Potlatch, ID 83855

208 875 0735  
509 336 3120

*Looking  
forward  
to a  
snowy  
New  
Year!*

# THE HOODOO

## DAILY SPECIALS

WINTER HOURS:

Thursday– Saturday:

11:00 a.m.-7:00 p.m.

Sunday 7:00 a.m.-7:00 p.m.

Monday 11:00 a.m.-3:00 p.m.

(closed Tuesday and Wednesday)

## HAPPY NEW YEAR!

### WE'LL BE OPEN NEW YEAR'S DAY

2009 DEARY STREET

HARVARD, ID 83834

208-875-1084

## Happy 2021

from

### NAPA - Kuhl Auto Parts!

We're ready to kick off the New Year!  
We've been stocking up with Heavy Duty  
truck and tractor parts, and we have  
pallets full of **winter products** to keep  
you running in the ice and snow.

Check out our Facebook page and  
Website for local events and sales!

**Monday - Saturday, 8-5**

140 6th St., Potlatch

(208) 875-1541

[www.kuhlautoparts.com](http://www.kuhlautoparts.com)

@NAPA-Potlatch, ID





Gritman Medical Center's clinics in Moscow, Potlatch, Kendrick and Troy are now scheduling in-person and telemedicine visits.

Telemedicine allows you to visit with your provider conveniently through your mobile device, tablet or computer. It also helps us continue to provide exceptional care while you follow stay-at-home orders and social distancing guidelines to stay safe during the COVID-19 emergency.

Please call to schedule a telemedicine or in-person visit:

**Moscow Family Medicine:** 208-882-2011

**Potlatch Family Care:** 208-875-2380

If you have questions about COVID-19 symptoms or testing, you can call your primary care provider or the Gritman COVID-19 Hotline at 208-883-4109. You can also text "COVID19" to 208-295-5080.

[gritman.org/coronavirus](http://gritman.org/coronavirus)

## Now offering telemedicine to keep you healthy and safe.



 **Gritman**  
MEDICAL CENTER

Exceptional care that's **closer to home.**



## Potlatch Veterinary Clinic

### Thank You to Our Amazing Community!

We are so grateful to all those that dropped off toys for area children through the Toys 4 Tots program and yummy goodies for our grateful staff! We loved being a part of the Potlatch Parade and can't wait for next year.

January is National Train Your Dog Month! Send us a video of your pup's neat trick and we will enter you into a drawing for a free exam and a bag of your choice of dog treats to help you with your continued training endeavors! You can send your videos to our email, [PotlatchVetClinic@gmail.com](mailto:PotlatchVetClinic@gmail.com) or to our Facebook page, [@PotlatchVetClinic](https://www.facebook.com/PotlatchVetClinic).

We will be closed for New Year's Day but will reopen January 2, 2021. To make an appointment, give us a call at 208-875-4838.

Merry Christmas and Happy New Year's!



## Little Logger Leaders December 2020

**Ms. Ridgeway's Fourth Grade:** Our December Little Logger Leader is **Haley Livingston**. Haley is a great student, and an amazing friend. She works very hard in everything she does and is always helping those around her. She gets along well with everyone and is creative in the way she learns and explores new concepts. We have really enjoyed having Haley in our class and we appreciate the friendship she offers.

**Mrs. Weaver's Fifth Grade:** **Maddyn Birge** is our December Little Logger Leader. Maddyn has proven to be an exceptionally hard worker, showing perseverance even when faced with difficult tasks. In addition, she maintains a positive attitude and is like a ray of sunshine in our class. We appreciate you, Maddyn!

**Mrs. Wilson's Fourth Grade:** Our Little Logger Leader this month is **Hailey Delph**. Hailey is such a hard worker, always giving her best efforts in all she does. In addition, she is super helpful to me and to her fellow classmates and is always kind and friendly! Her 'can-do' attitude is infectious and her willingness to stay with a problem until she figures it out is an admirable quality. These are the attributes that make Hailey a leader in our classroom and will help her go far in life! Great job, Hailey!

**Mr. Christianson's Sixth Grade:** For December, our LLL is **Junior Capello**. What makes Junior a leader is his curiosity and his ability to ask insightful questions. He comes into the classroom prepared everyday and isn't afraid to be the first person to raise his hand and find a connection to the content being taught in our class discussions or volunteering to read the material. Junior goes out of his way to make sure that everyone in the class gets involved in the conversation and has a chance to speak. Never stop asking questions. Keep up the great work Junior!

**Mr. Gossack's Sixth Grade:** **Raiden Weldy** is our LLL for December. Raiden is a hard-working student who chooses to come to school every day with a positive attitude, despite the circumstances. Raiden is always going out of his way to make people smile by cracking jokes, doing something funny or just by smiling at you with a mischievous twinkle in his eye. While bringing this light-heartedness to our classroom, Raiden also leads his peers academically through his participation, work ethic, and overall desire to learn! Raiden, keep up the awesome work!

**Mrs. Pfaff's Third Grade:** Our December Little Logger Leader is **Sydney Minden**. Sydney comes to class with a positive attitude, a big heart, and energy. She tackles all of her work with a can-do approach and cares about doing her best. I appreciate how Sydney is a willing helper, whether it is cleaning the room, explaining an idea to a classmate, or solving problems. She is a confident member of our classroom team and I enjoy her stories and sense of humor.

**Mrs. McKinney's First Grade:** Our Little Logger Leader for December is **Mylah Allen**! Mylah is an absolute joy to have in my classroom. She is a very hard worker and always tries to do her best on all tasks. Mylah is kind to all of her classmates. She has a positive attitude and is always ready with an encouraging compliment. Mylah, I am so grateful you are my student. Keep up the good work and thank you for being you!

**Ms. Montgomery's Second Grade:** I'm proud to announce that our December Little Logger Leader is **Aria Stoor**. Aria is an eager learner and is both ambitious and confident in completing her lessons on time and even before they are due. She is a gentle and quiet student who always has a smile on her face. Aria demonstrates leadership skills by being a considerate and respectful citizen of our classroom family.

**Mrs. Short's Kindergartens:** **Max Heilman** is our **Eager Beaver** Little Logger Leader for December. Max has been a strong leader in our classroom by being consistently responsible, kind, and respectful. He comes to school every day ready to learn, work hard, and have fun. Max takes his time and cares about his learning. He is also a great friend to his classmates. Thanks for being such a positive member of our classroom, Max!

**Keira May** is our **Busy Bee** Little Logger Leader for December because of her hard work and positive attitude. Keira shows everyday how much she cares about her learning, and she has been putting so much effort into everything she does. She is especially determined to make progress in her reading and writing and by taking every opportunity to practice and improve. It has been so much fun to watch her take off in her learning!

**Mrs. Gussenhoven's First Grade:** **Konnor Sines** is our Little Logger Leader for the month of December. Konnor works very hard in class and I am proud of the progress he has made in his reading. He is very responsible and gives every task his best effort even when things are difficult. Konnor is a great role model for his classmates and is always ready to help whenever it is needed. Keep up the great work, Konnor. I am so proud of you!

**Mrs. Carlson's Fifth Grade:** Our Little Logger Leader for December is **Jaidalyn Andres**. Jaida is a self-motivated student who demonstrates high standards for her work. She is a responsible student who takes pride in all she does. Jaida comes in each day with a smile and a positive attitude. Well done, Jaida!

**Mrs. Burkgart's Third Grade:** December Little Logger Leader is **Myles Eacker**. Myles told me at the beginning of the year that his goal was to be a Little Logger Leader and he has done everything he can to reach that goal. I am so proud of the daily work that Myles puts into every aspect of school. He has a huge heart and a love for books that he has been sharing with the whole class. He wants to learn everything about everything and has such a love for school that his energy rubs off on those around him. I am so happy to have Myles as part of our classroom family.

**Ms. Greer's Second Grade:** Our Little Logger Leader for December is **Atlie Boller**! Atlie has been an outstanding leader in our classroom in many ways. When she sees a student who is feeling down, by themselves, or needing help with anything in or out of the classroom, she has jumped to the opportunity to be there for them. She has shown that leaders have compassionate hearts and that they make sure no one in the class gets left behind. I admire your willingness to help everyone, Atlie. Keep up the great work!

### Potlatch Library Hours

◆ Monday-----2-7

◆ Tuesday-----3-7

◆ Wednesday-----2-7

◆ Thursday-----3-7

◆ Friday-----10-2

◆ Closed on Weekends...208-875-1036


[potlatch@latahlibrary.org](mailto:potlatch@latahlibrary.org) [facebook.com/potlatchfriends](https://www.facebook.com/potlatchfriends)



*On Behalf of the Staff, the Administration, and  
the Board of Trustees of the Potlatch School District*



MERRY CHRISTMAS & HAPPY NEW YEAR



**Cabinets  
& More**  
Custom Cabinetry and Furniture  
Tom Carpenter  
Owner, Cabinetmaker  
**208-875-0075**  
Website: [www.cabinetsnmore.net](http://www.cabinetsnmore.net)  
Email: [ybs@cpcinternet.com](mailto:ybs@cpcinternet.com)  
Licensed & Insured in  
Idaho & Washington

## News From the Gamebird Foundation

### Red-Legged Partridge

We raised and released 240 of these this year. They are doing great so far. We have not had to do any supplemental feed this winter as we want to see how they survive. We hope to have feed and if it comes down to it, we will start feeding them. We want to raise more red-legged partridges next year and we have 2000 eggs ordered now. If we can raise some more money, we would like to get another 1000 eggs. These are one of the easiest birds to raise, we hatched 256 and released 240. The most we lost were those that didn't hatch well and were very weak. We will feed all pheasant populations if needed and if we have the feed.

If you would like to raise some of these and could help out with some of the costs we would sure appreciate it. If you can't raise them, please donate a few \$ to help us along. You can go to The Gamebird Foundation Web and make a donation or you can join and pay membership dues with a credit card. Dues are \$25.00 for a family. The website is [www.thegamebirdfoundation.org](http://www.thegamebirdfoundation.org). We are a 501c3 non-profit and all donations are tax deductible.



Red Legged Partridge

"The Pheasant Guy"

Jim Hagedorn

208-883-3423

[jhag1008@gmail.com](mailto:jhag1008@gmail.com)

<http://www.thegamebirdfoundation.org/>



Some of our pheasant out in the wild!

## Potlatch Senior Citizens Center Meal Site

Meals are served at 12:00 noon every Monday, Wednesday (except the first Wednesday of the month), and Friday at the Senior Citizens Center (formerly the Rebekah Hall), 645 Pine Street, Potlatch, for senior citizens as well as non-seniors. The suggested donation is \$4.00 for seniors with adjusted pricing for non-seniors. Menus listed below or call 208-875-1071 on meal days to find out what is being served.

Meals are available for take out with pickup and delivery only, no inside dining. Call by 10:00 a.m. on meal day to request your meal.

### DELIVERY AND PICKUP AVAILABLE

### MUST CALL AHEAD

#### **Potlatch Senior Nutrition Program January 2021**

1-1 No Meal	1-18 Chicken Alfredo
1-4 Fish Fillet	1-20 Taco Pie
1-6 No Meal	1-22 Hot Pork Sandwiches
1-8 Chili Dogs	1-25 Spaghetti
1-11 Chicken Parmesan	1-27 Chicken Patties w/Bun
1-13 Lentil Chili	1-29 Cook's Choice
1-15 Meatloaf	

## Princeton Nazarene Church

Happy New Year from all of us at the Princeton Church of the Nazarene!

We invite you to worship with us during 2021! We will be worshipping in person and live streaming on Facebook.

Sunday Services

Sunday School for all at 9:30 a.m.

Welcome Fellowship at 10:30 a.m.

Worship Celebration at 10:45 a.m.

Any questions? Call Pastor Bob at 208-596-3780 or Lisa at 208-596-3072.

You can follow updates on service times as well as any cancellations on our Facebook page or call Lisa at 208-596-3072 or Pastor Bob at 208-596-3780.

## Grace Community Church

Grace Community Church will have services at the church and via live streaming on their Facebook page "Grace Community Church Potlatch Idaho" at 10:00 a.m. and with video anytime after that. Check their Facebook page for links and updates.

## Faith Church

Sunday Schedule:

Children's Breakfast: 9:10 a.m.

Sunday School (All Ages): 9:30 a.m.

Worship: 10:30 a.m.

Weekly Studies:

Men's Bible Study: Wednesday 6:30 p.m., Faith Church

Women's Bible Study: Wednesday 6:30 p.m., Nicholson Residence

<https://www.faithchurchoaway.org/>. Please check their Facebook page to get the links and updates.

## Area Churches (listed alphabetically)

Church of Jesus Christ of Latter-Day Saints

4 Cedar Street, Potlatch, ID 83855 509-397-2116

Sunday number 208-875-0009, 208-305-2929

Worship 10:00 a.m. Sundays

Elmore United Methodist

Pastor 208-875-1135

6147 Highway 95 N, Potlatch, ID 83855

Sunday School: 9:30 a.m. Worship 10:45 a.m.

Faith Church

Pastor Lee Nicholson-208-875-0583

401 3rd Street, PO Box 208, Onaway, ID 83855

Women's Bible Study, 6:30 p.m. at Nicholson's on Wednesday

Men's Bible Study, 6:30 p.m. at Faith Church on Wednesday

Sunday: 9:30 - Kids Krew; Teen & Adult classes -10:30 - Worship

website: <https://faithchurchoaway.org>

Family Bible Fellowship

Wayne Glassman - 208-274-2900

Palouse River Community Center

Princeton, ID 83857

Freeze Community Church

617 W. Freeze Rd., Potlatch, ID 83857

Worship service 11:00 a.m. Sundays

208-669-0806, 208-875-1272, 208-875-8875 or 208-883-9544

Grace Community Church

Pastor Larry Veith - 208-875-0015

305 4th Street, Potlatch, ID 83855

9:00 a.m. Sunday school starts.

10:00 a.m. worship

Princeton Church of the Nazarene

Pastor Robert Lambert - 208-596-3780

1008 Gold Hill Rd., Princeton, ID 83857

Sunday School classes for everyone: 9:30 a.m.

Worship 10:45 a.m.

St. Mary's Catholic Church

208-882-4613

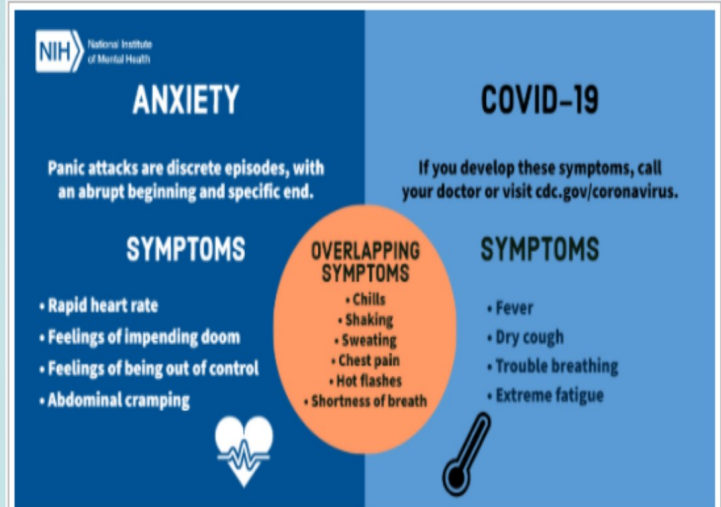
725 Spruce Street, Potlatch, ID 83857

Mass: Sunday 8:00 a.m.

Wild Rose Mennonite Congregation

Verle Koehn - 208-875-1480

1350 Chaney Road, Viola, ID 83872



Pandemics can be stressful! Social distancing can make people feel isolated and lonely, increasing stress and anxiety. Coping with stress in a healthy way will make you, the people you care about, and your community stronger.

The Centers for Disease Control and Prevention website provides information on the mental health effects of Covid-19. <https://www.cdc.gov/coronavirus/2019-ncov/daily-life-coping/managing-stress-anxiety.html>

National Suicide Prevention Lifeline 1-800-273-8255

Northern Idaho Crisis Center Hotline 208-625-4884

TEXT "STRESS" TO 844-486-0046 to get personalized stress management techniques sent to your phone

powered by  
**PIKTOCHART**



# C A L E N D A R O F E V E N T S

## Jan 1....New Year's Day—HAPPY NEW YEAR!

Jan 5.....Game Bird Foundation meets at Latah County Fairgrounds, 6:30 p.m.

Jan 6.....Regular Lion's Club meeting at 735 Pine St, Potlatch, 7:00 p.m.

Jan 6.....Palouse River Community Center in Princeton no meeting this month

Jan 7.....Princeton Community Ladies, Princeton, no meeting this month

Jan 11....VFW Post 10300 meeting at 7:00 p.m. Log Cabin., Potlatch

Jan 13....Harvard Ladies Aid meets at the Harvard Hall

Jan 13....Potlatch School Board of Trustees meeting, Potlatch Jr.-Sr. High School, 130 6th St, open to the public, starts at 7:00 p.m.

Jan 14....Potlatch Food Pantry, 10:00 a.m.— Noon, 6:00-8:00 p.m., page 2

Jan 18...Idaho Human Rights Day/Martin Luther King, Jr. Day

Jan 19....American Legion Robinson Post 81 meets at 7:00 p.m. at the VFW Hall

Jan 20....Regular Lion's Club meeting at 735 Pine St, Potlatch, 7:00 p.m.

Jan 21....Potlatch Recreation District meets at 7:00 pm in the city hall, call 208-875-0735

Jan 28....Potlatch Food Pantry, 10:00 a.m.-12:00 Noon, 6:00-8:00 p.m., page 2

Jan 28....Idaho Food Truck, Grace Community Church, page 2

Feb 13...SAVE THE DATE-PRCC TAKE-OUT DINNER, SEE BELOW

## HAPPY NEW YEAR FROM THE C.I.A. NEWSLETTER CREW!

**SAVE THE DATE: OVEN-ROASTED SIRLOIN STEAK BOXED TAKE-OUT DINNER**  
Dinner to include oven-roasted steak with sides and dessert. Treat your Valentine to a take-out dinner. No inside dining available.

Pick up your meal from 5:00-7:00 p.m. at Palouse River Community Center parking lot in Princeton on Saturday, February 13, 2021.

Meals are a \$15.00 donation, if purchasing that night.

Advanced tickets available for \$12.00 donation, cash or check only.

Call Bill or Lois at 208 875-0997 or Joanne at 208 875-1503 for tickets. This is a fund raiser to benefit the Palouse River Community Center. Thanks for your support.

AA meetings at Noon in the Latah Recovery Center, 531 S. Main, Suite #B, Moscow, 208-883-1045

**Food Addicts in Recovery Anonymous**  
Thursday 6:30-8:00 p.m. at First United Methodist Church, 322 E. 3rd Street, Room 112, Moscow, ID ,  
Contact: Karen 509-263-5173.

*The views expressed in articles, letters and advertisements are not necessarily those of the newsletter personnel, but are a First Amendment Right.*

**Pinochle games in Princeton at the PR Community Center Thursday nights.**  
**POSTPONED**

**Play Bingo on Monday nights starting at 7:00 p.m.**  
**PR Community Center**  
**POSTPONED**

**Palouse River Community Center Rental Questions**  
Call/Text Tia McKinney  
208-301-4269  
See PRCC Facebook page



### Idaho's Best Homes & Land

5th Annual Outdoor Christmas  
Decorating Competition Winners:

1st Place—\$100 Brian & Dante Woolverton

2nd Place—\$50 Chuck & Sheryl Smith

3rd Place—\$50 Bill & Donna Nagle

Honorable Mentions: PS Espresso Coffee Card

-Christopher & Angela Rush -David & Amy Chambers  
-Rick & Davalee Minden -Bret Carpenter & Trisha Quiring  
- TJ & Lani Hadaller -Justin & Amanda Heilman

Stop by our office to receive your prize!!

***Wishing you Peace,  
Love and Laughter in  
the New Year!!***



**For Information About ANY Listing Please Call:**

KATHI NYGAARD, BROKER/REALTOR®-208-875-0345

OR

SCOTT BRICKER, REALTOR®-509-715-9111

*"A hometown real estate company serving Latah County & beyond!"*

230 6th Street, Potlatch ID idahosbest.properties

# Snow Removal

- ◆ Roofs
- ◆ Sidewalks
- ◆ Driveways

**Call Tim Moore**  
**208-301-3264**

